

BYLAW NO. 508/05

**BEING A BYLAW OF THE
MUNICIPAL DISTRICT OF MACKENZIE NO. 23,
IN THE PROVINCE OF ALBERTA,**

**TO ADOPT THE
HAMLET OF LA CRETE COMMUNITY DEVELOPMENT PLAN**

WHEREAS, the Council of the Municipal District of Mackenzie No. 23 in the Province of Alberta has deemed it advisable to update the Hamlet of La Crete Community Development Plan,

NOW THEREFORE, the Council of the Municipal District of Mackenzie No. 23 in the Province of Alberta, duly assembled, hereby enacts as follows:

1. That the Hamlet of La Crete Community Development Plan be adopted as attached.

First Reading given on the 14th day of June 2005.

"Bill Neufeld" (signature on file)
William Neufeld, Reeve

"B. Spurgeon" (signature on file)
Barb Spurgeon, Executive Assistant

Second Reading given on the 27th day of July 2005.

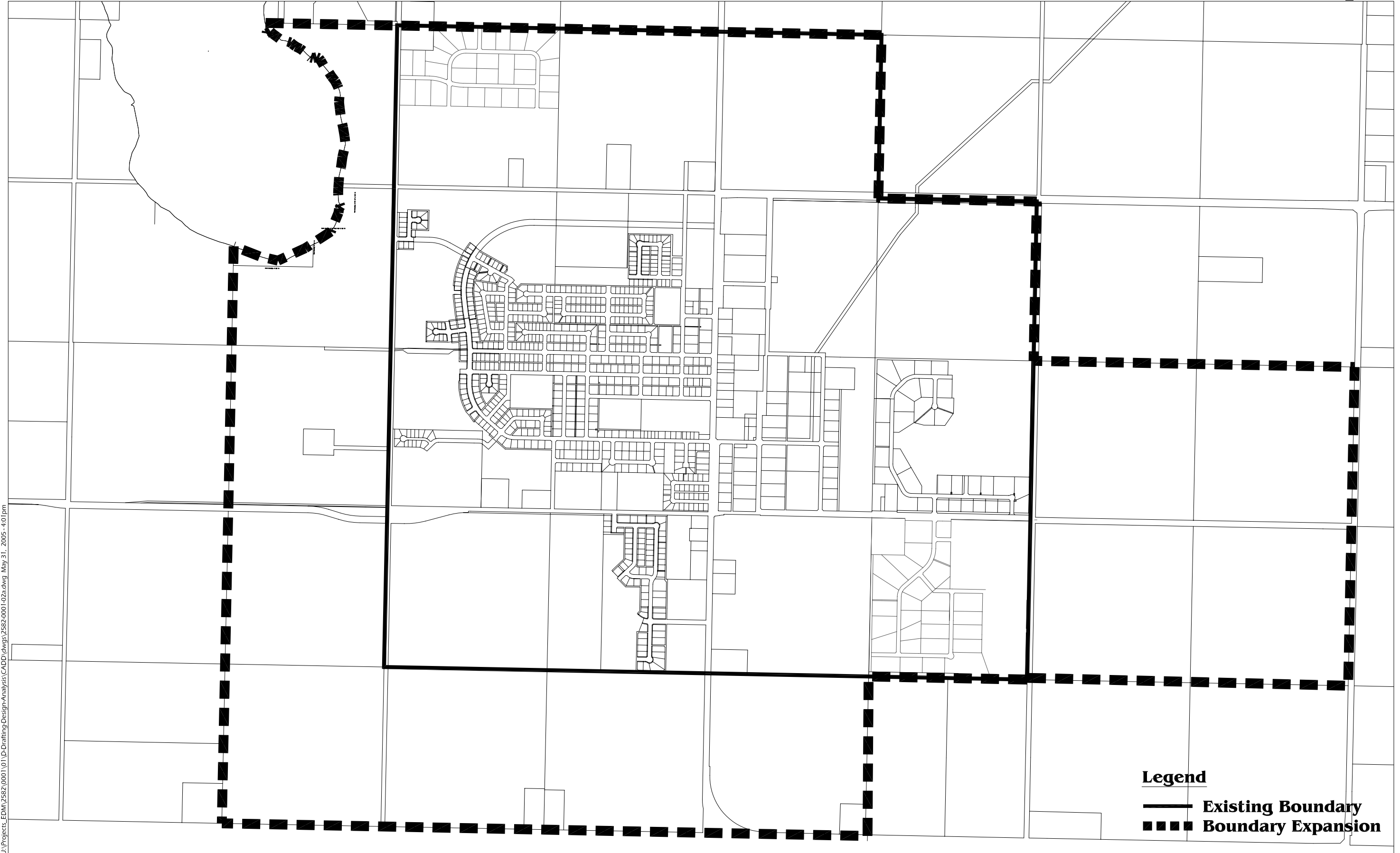
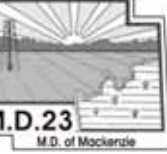
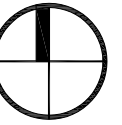
"Bill Neufeld" (signature on file)
William Neufeld, Reeve

"B. Spurgeon" (signature on file)
Barb Spurgeon, Executive Assistant

Third Reading and Assent given on the 27th day of July 2005.

"Bill Neufeld" (signature on file)
William Neufeld, Reeve

"B. Spurgeon" (signature on file)
Barb Spurgeon, Executive Assistant



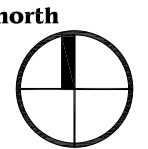
Legend

- Existing Boundary
- Boundary Expansion

boundary expansion

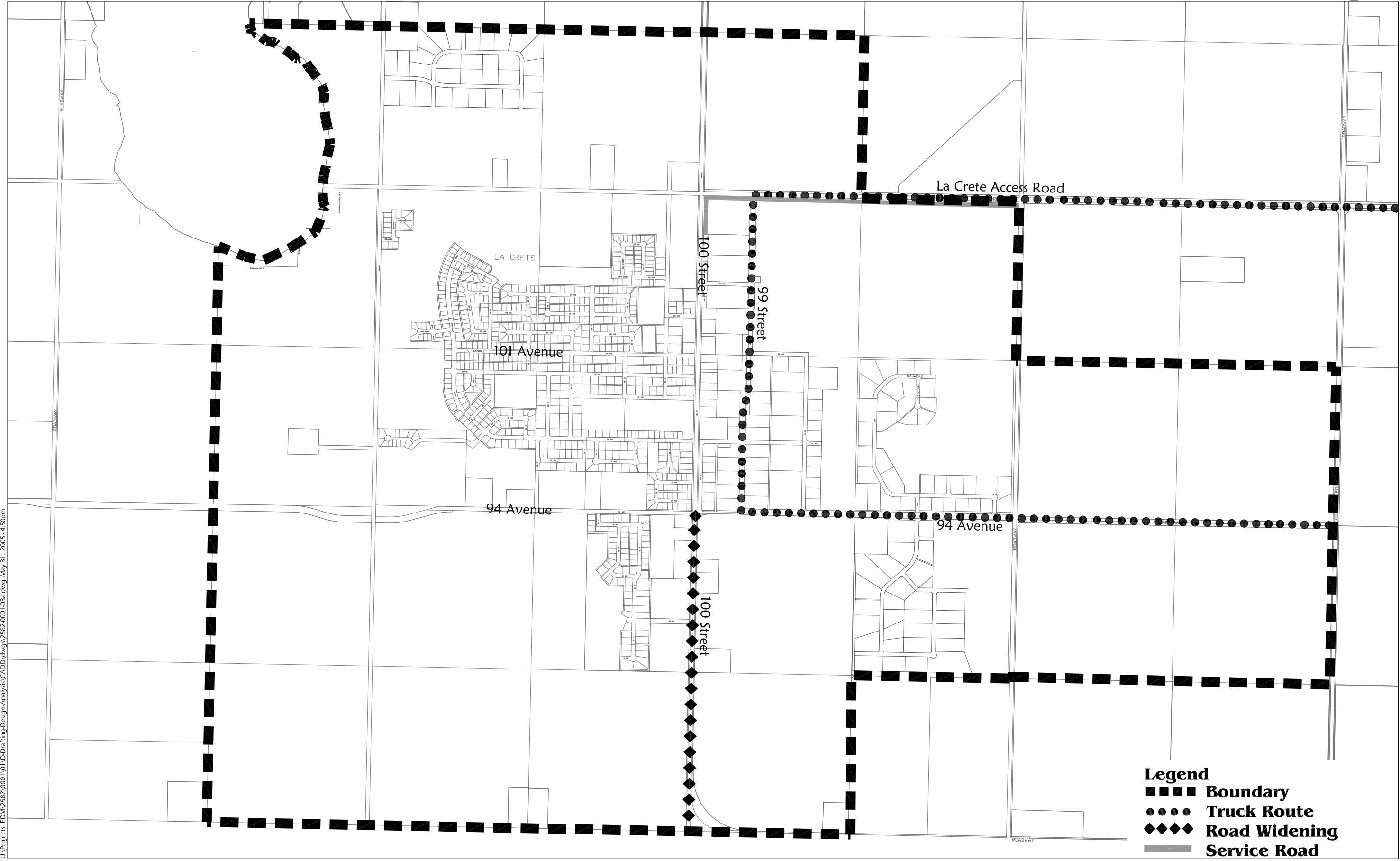
Schedule

B



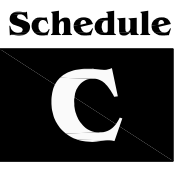
area structure plan

scale N.T.S.

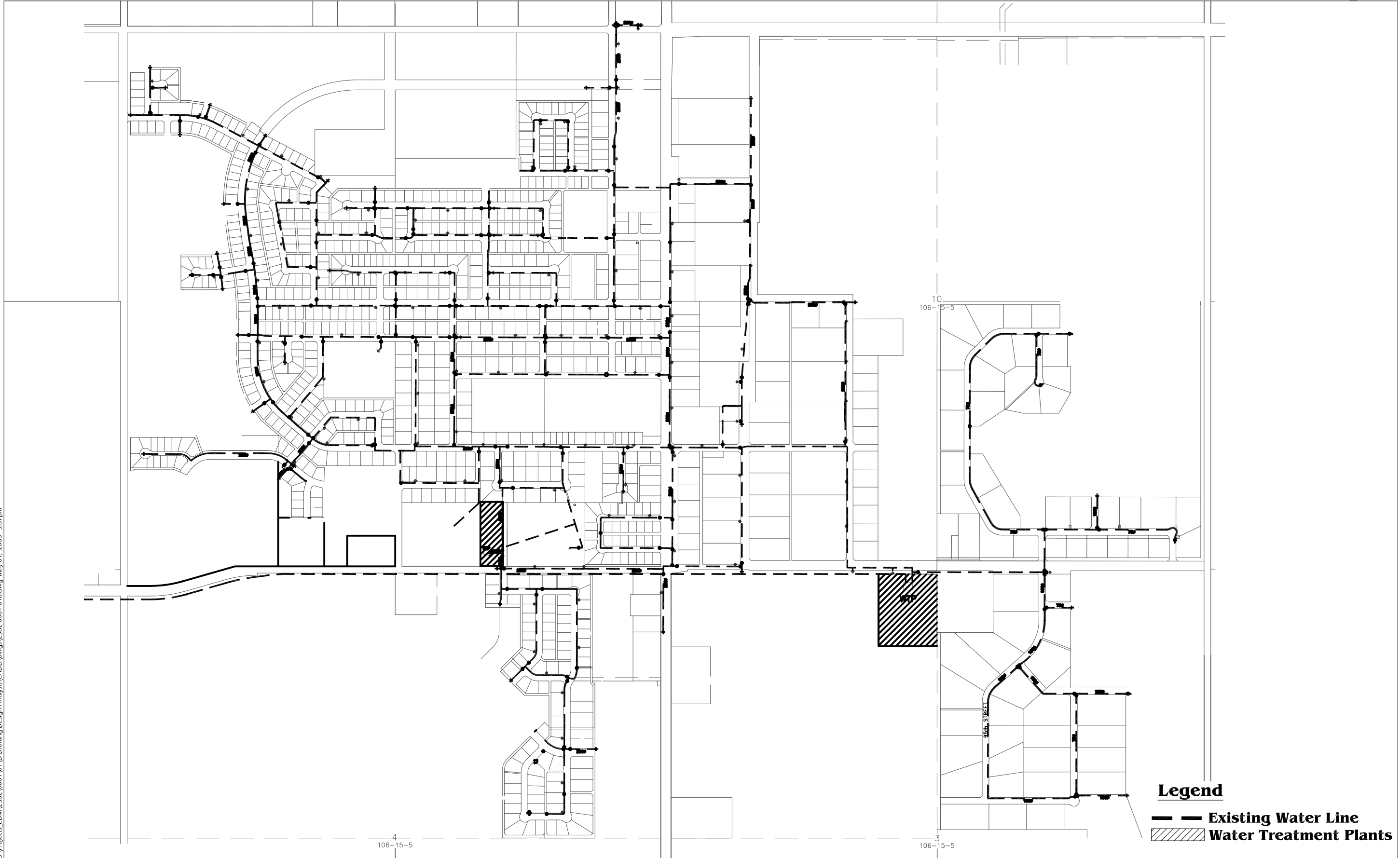
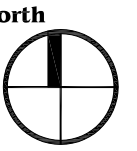


- Legend**
- ■ ■ ■ Boundary
 - ● ● ● Truck Route
 - ◆ ◆ ◆ ◆ Road Widening
 - ▬ Service Road

roads/truck route



U:\Projects_EDM\2582\0001\01\0-Drafting-Design-Analysis\CADD\dwgs\2582\0001\03a.dwg May 31, 2005 - 4:50pm

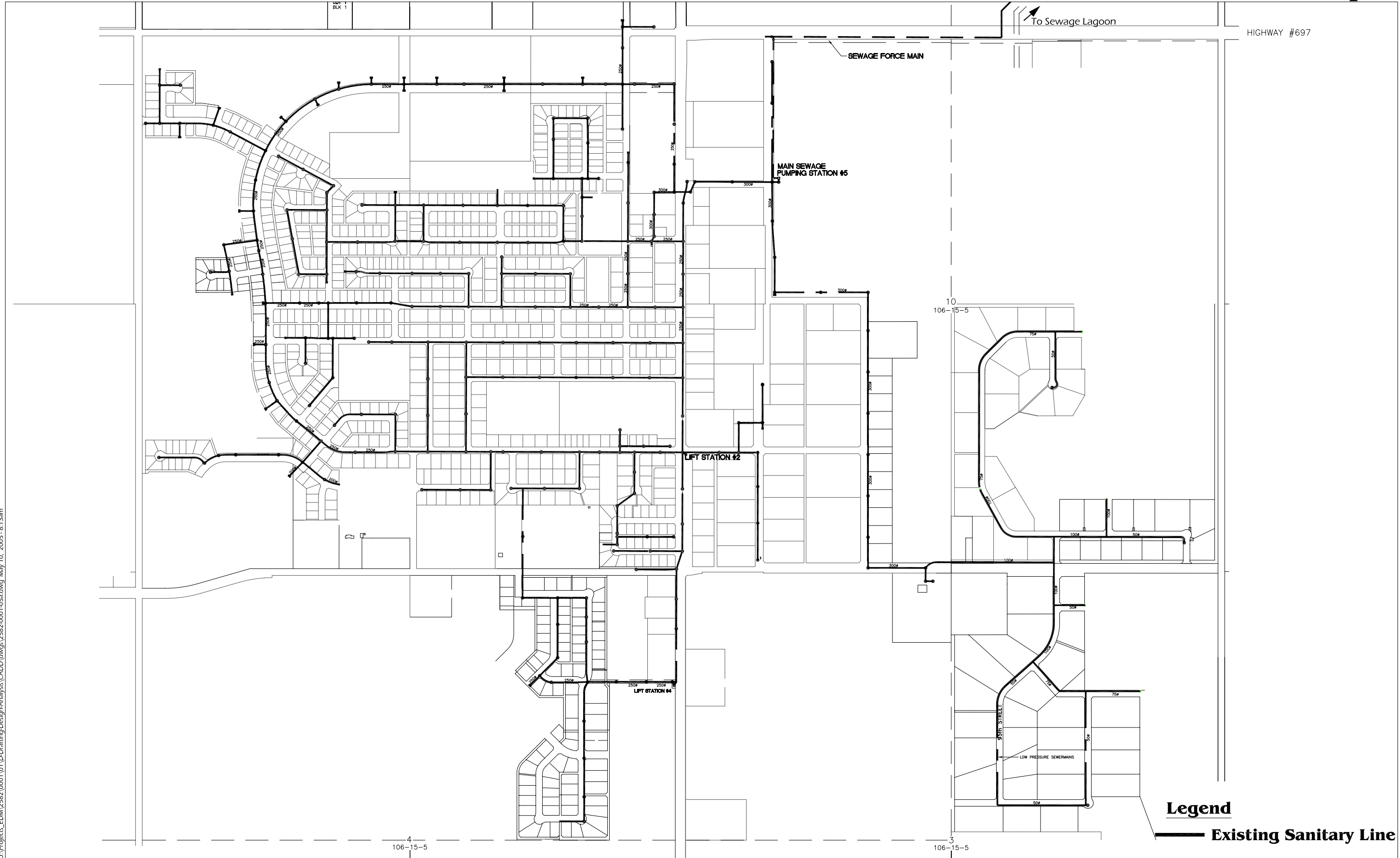
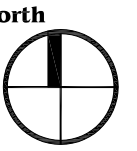


existing water servicing plan

Schedule

D

U:\Projects_EDM\2582\0001\01\1\01\Drafting-Design-Analysis\CADD\dwg3\2582-0001-04a.dwg May 09, 2005 - 5:07pm

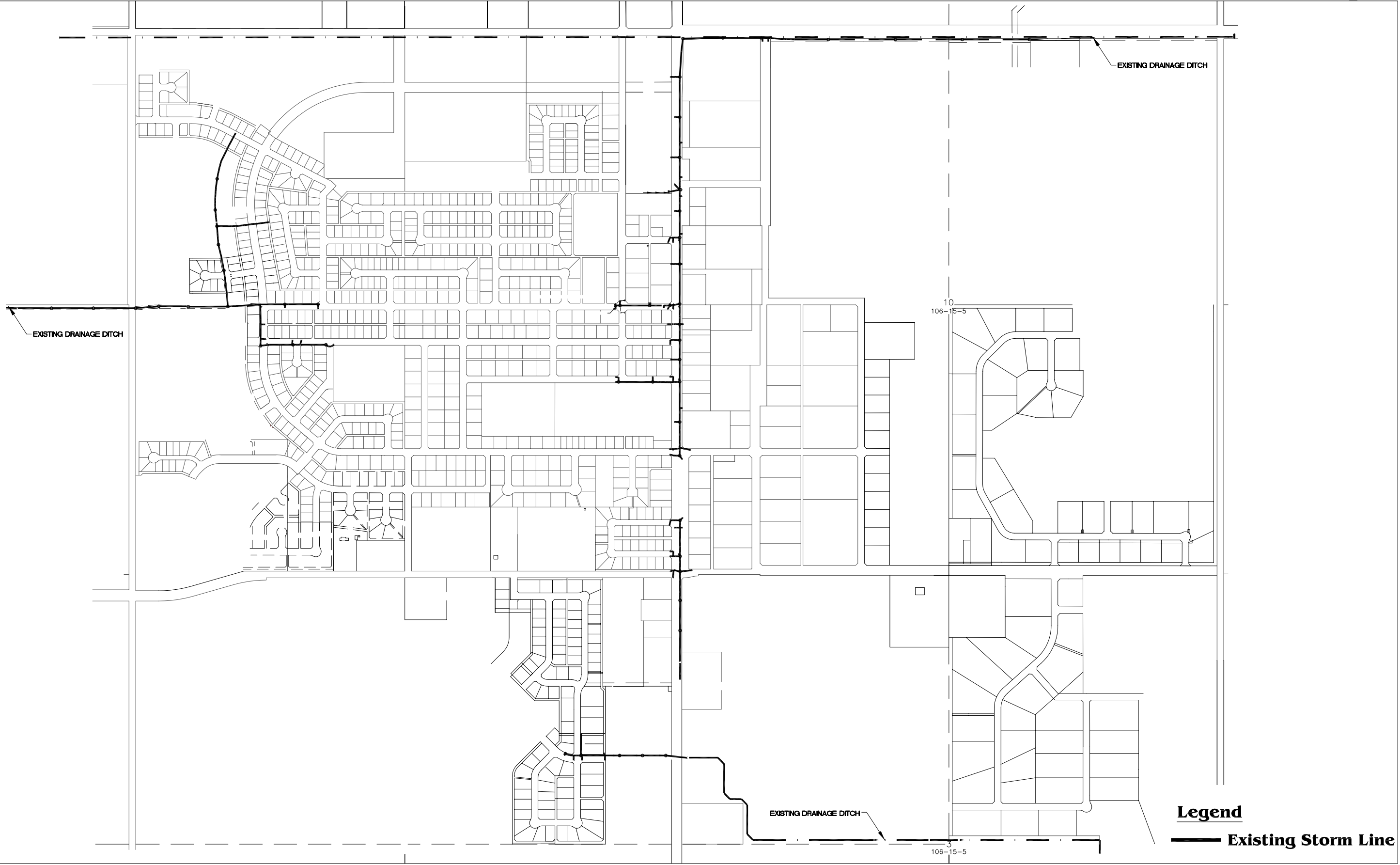
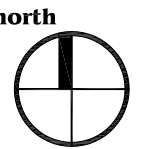


existing sanitary sewer servicing plan

Schedule



U:\Projects_EDM\2592\0001\01\LDrafting-Design-Analysis\CADD\dwg3_2592\0001-05.dwg May 10, 2005 - 8:13am

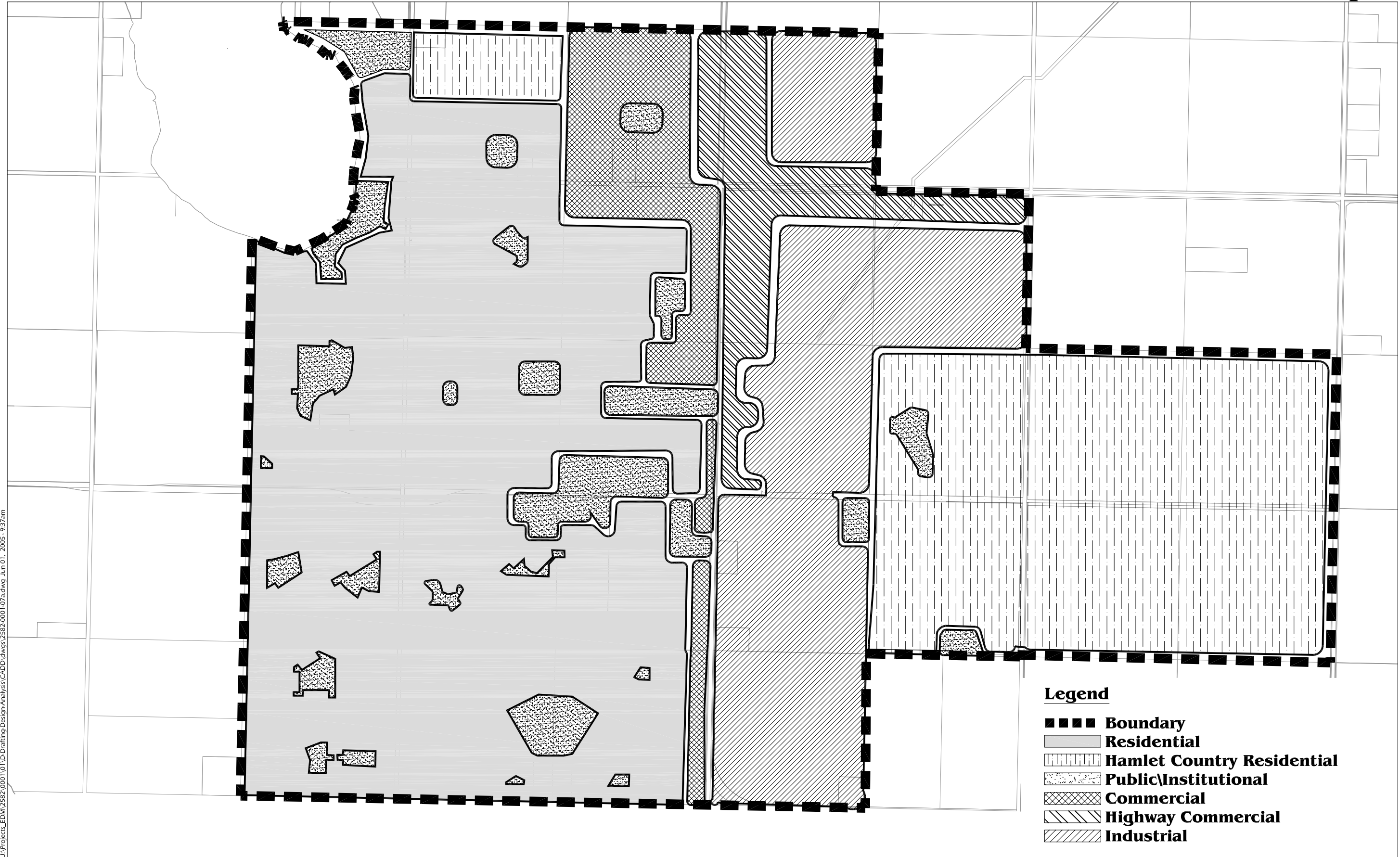
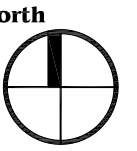


U:\Projects_EDM\2592_0001\01\1\01\Drafting-Design-Analysis\CADD\dwg3_2592-0001-00a.dwg, May 10, 2005 - 8:11 am

existing storm water servicing plan

Schedule

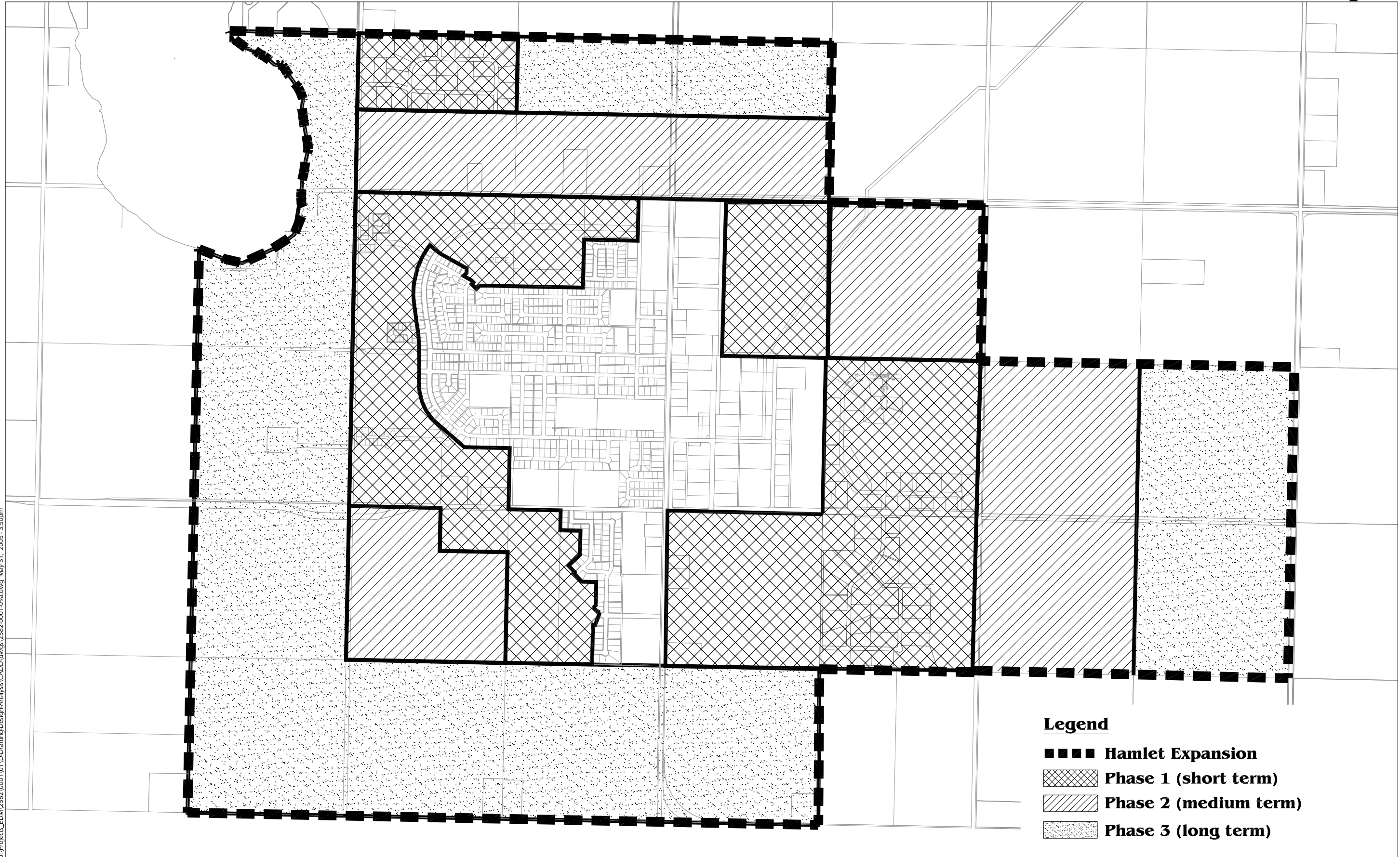
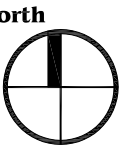




Legend

- ■ ■ ■ Boundary
- ▭ Residential
- ▭ Hamlet Country Residential
- ▭ Public/Institutional
- ▭ Commercial
- ▭ Highway Commercial
- ▭ Industrial





Legend

- ■ ■ ■ Hamlet Expansion
- ▣ Phase 1 (short term)
- ▤ Phase 2 (medium term)
- ▥ Phase 3 (long term)

U:\Projects_EDM\2582_0001\01\LDrafting-Design-Analysis\CADD\dwg\2582-0001-09a.dwg, May 31, 2005 - 3:50pm

phasing plan

Schedule

